

Revalidation is the process by which licensed doctors are required to demonstrate on a regular basis that they are up to date and fit to practise.

Revalidation aims to give extra confidence to patients that their doctor is being regularly checked by their employer and the GMC.

A **DESIGNATED BODY** is an organisation set out in legislation

A **CONNECTION** links a doctor with a designated body

A responsible officer:

- is **NOMINATED** or **APPOINTED** by a designated body
- has a connection with one or more doctors
- must be a licensed doctor with a minimum of 5 years experience

A doctor has one and only one responsible officer

# Designated Body

Nuffield Health is a designated body for the purpose of doctor revalidation.

Most licensed doctors have a connection with **one organisation** that will provide them with a regular appraisal and help them with revalidation. This organisation is called the 'designated body'.

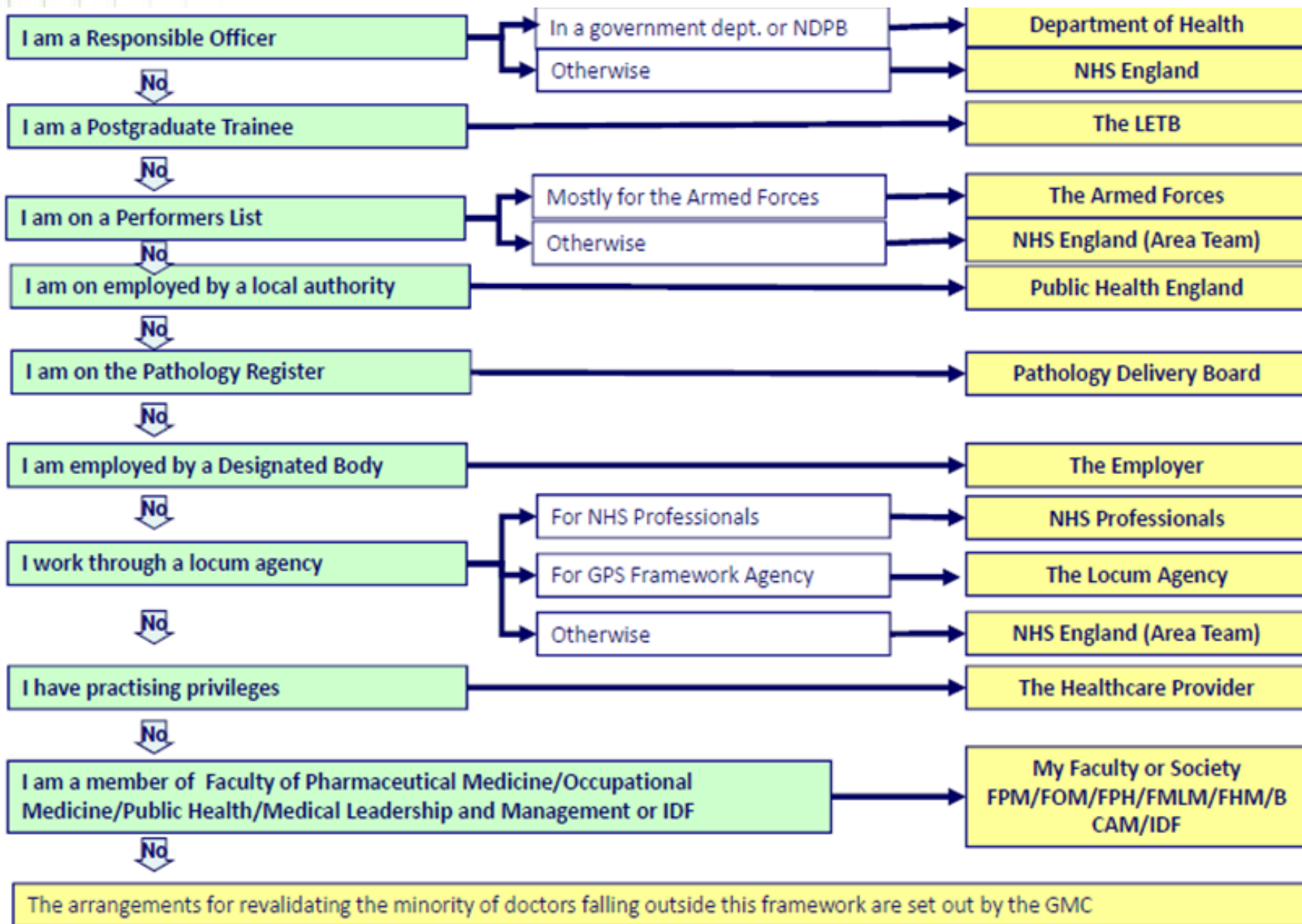
**Only UK organisations** can be designated bodies, because the legal rules that determine this only cover the UK.

The doctors connection with this organisation ensures they are always:

- supported with appraisal and revalidation
- working in an environment that monitors and improves the quality of its services, regardless of how or where the doctors practise in the UK.

It is the responsible officer of this designated body who will make a recommendation about the doctor, usually every five years, stating the doctor is up to date, fit to practise and should be revalidated.

# Is Nuffield Health the Doctors designated body?



# Role of Responsible Officer

## Responsible Officers will:

- ensure that those doctors who provide care continue to be **safe**;
- ensure doctors are properly **supported** and **managed** in sustaining and, where necessary, **raising their professional standards**;
- for the very small minority of doctors who fall short of the high professional standards expected, ensure that there are fair and **effective local systems to identify** them and **ensure appropriate remedial**, performance or regulatory action to safeguard patients; and
- **Increase public and professional confidence in the regulation of doctors**;
  - ensure that the designated body carries out regular appraisals on medical practitioners
  - establish and implement procedures to investigate concerns about a medical practitioner's fitness to practise raised by patients or staff of the designated body or arising from any other source; .
  - where appropriate, to refer concerns about the medical practitioner to the General Council; .
  - where a medical practitioner is subject to conditions imposed by, or undertakings agreed with, the General Council, to monitor compliance with those conditions or undertakings; .
  - to make recommendations to the General Council about medical practitioners' fitness to practise; .
  - to maintain records of practitioners' fitness to practise evaluations, including appraisals and any other investigations or assessments.

# What a Responsible Officer does

## Regulatory functions

- (a) ensure the designated body carries out regular appraisals;
- (b) establish and implement procedures to investigate concerns;
- (c) refer concerns about the medical practitioner to the GMC;
- (d) monitor compliance with GMC conditions or undertakings;
- (e) make recommendations to the GMC about fitness to practise;
- (f) maintain records of practitioners' fitness to practise evaluations, including appraisals and any other investigations or assessments

# Details of Responsible Officer

## Nuffield Health Responsible Officer:

- Dr Davina Deniszczyc
- [revalidation@nuffieldhealth.com](mailto:revalidation@nuffieldhealth.com)
- Davina became Responsible Officer for Nuffield Health in January 2014 and is working closely with UK accredited revalidation advisory bodies to support Nuffield Health and all doctors with a prescribed connection in a revalidation programme. The core focus of the enhanced revalidation programme is that of clinical appraisal quality and continued engagement of prescribed connections.

## Nuffield Health Deputy Responsible Officer & Hospital Medical Director:

- Dr Geoff Graham
- [revalidation@nuffieldhealth.com](mailto:revalidation@nuffieldhealth.com)
- Geoff will support the revalidation team and hospitals to meet required standards for appraisal and revalidation. Geoff will work closely with the RO for the purpose of clinical investigations, doctor concerns, appraisal engagement and doctor support and remediation.

## Nuffield Health Appraisal and Revalidation Team:

- [revalidation@nuffieldhealth.com](mailto:revalidation@nuffieldhealth.com)
- Provides support to the Responsible Officer for the purpose of revalidation and appraisal. Coordinates between appraisers and appraises, dates, paperwork and correspondence making sure timescales are met for the purpose of revalidation. The team will also liaise with external bodies (General Medical Council (GMC), NHS England, Department of Health, Clinical Directors, Senior Medical Staff, external Responsible Officers. The team can answer questions or provide training on any aspect of appraisal or revalidation.

# Details of Revalidation Process

## The Clinical Appraisal (face to face discussion):

- We use Miad registered and trained appraisers to carry out appraisals for all doctors who have a Prescribed Connection to Nuffield Health. Miad is an NHS and Healthcare dedicated training company, established in 1995 to provide learning solutions to healthcare professionals and organisations. Miad has trained over 600 Responsible Officers and Appraisal Leads and has for sixteen years been involved in delivering high quality/cost effective Management, Leadership, Medical Education and Appraisal Training to over 30,000 doctors and 400 Healthcare organisations. Additionally, Miad QA Healthcare organisations to ensure their appraisal for revalidation systems and processes meet the GMC requirements

## Revalidation Management System (software support for appraisal documents and 360):

- Nuffield Health uses Equiniti 360° Clinical an innovative and specialist provider of revalidation software and training solutions specifically for the healthcare sector. All doctors with a prescribed connection will be given access to the Equiniti system and will be able to input appraisal and revalidation data which will be used to evidence fitness to practice.
- The software allows the responsible officer to have access to a live dashboard that will support Nuffield Health to maintain its designated body status by adhering to the GMCs Framework of Quality Assurance for Revalidation.
- *Using Equinity for the purpose of clinical appraisal is a mandatory requirement for doctors with a prescribed connection to Nuffield Health*

# Overview of Nuffield Health Revalidation Process



A deferral is a purely administrative recommendation, there is no impact on the doctor's licence or registration

A non-engagement recommendation can be made at any time, revalidation dates may be brought forward if a doctor is not engaging in annual appraisal

# Supporting Information for Revalidation

Doctors need at least one revalidation ready appraisal where they have collected and discussed all 6 types of supporting information.

## Last 12 months

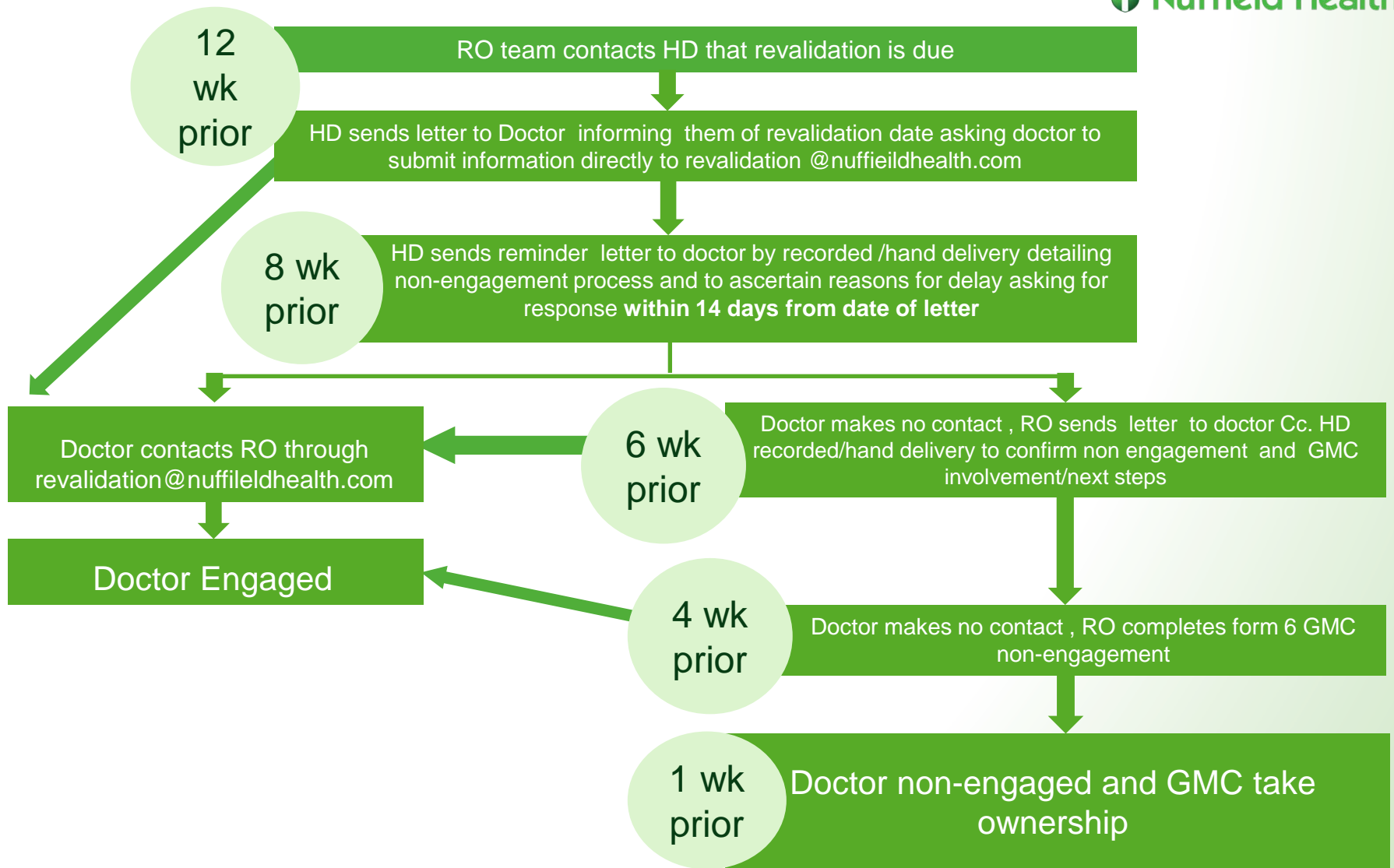
- Complaints and compliments
- Significant events and incidents
- CPD

## Last 5 years

- Quality Improvement Activity
- Patient & Colleague feedback

## Colleague and Patient Feedback must:

- still be relevant to the doctor's current scope of practice
- have focused on the doctor and quality of their practice
- been collated in a way that promoted objectivity and maintained confidentiality



# Revalidation Non-Engagement