

Essential Information

Fire

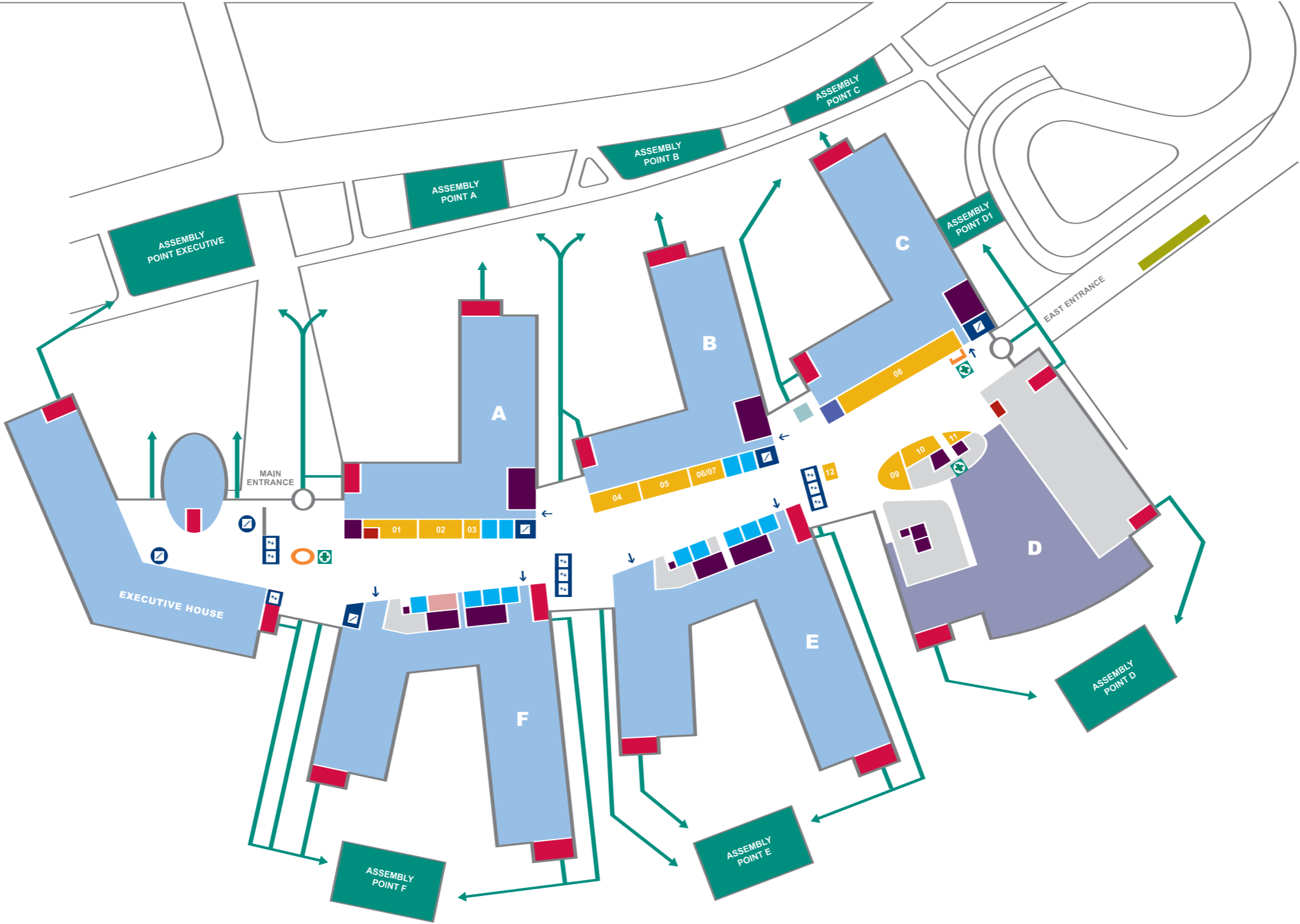
The main building has a voice alarm, whilst all other buildings on the campus have conventional sounders. Please listen to, and follow all the instructions given. Fire exit routes are marked by standard green and white safety signage. Fire Marshals and security employees will be on hand to assist in any emergency.

First Aid

Trained first aiders (RBS and security employees) are available throughout the site to provide basic first aid. If you have any queries please contact the nearest reception area. A first aid room is located by the Restaurant where assistance can be obtained.

Smoking

In line with Group policy, smoking is not allowed in any of the buildings on-site. Furthermore, the ban extends to the entrance and external environs of the buildings.



Retailers

- 01 RBS branch
- 02 Starbucks
- 03 Vodafone
- 04 1727 Deli
- 05 Paterson SA (hair salon)
- 06/07 Baxters
- 08 Tesco Express
- 09 Alliance Pharmacy
- 10 Johnsons
- 11 Sarah Menzies Flowers
- 12 Starbucks Kiosk

RECEPTION	LIFTS	RESTAURANT AND LOUNGE	BUS AND TAXI
ENTRANCE TO BUSINESS HOUSES	STAIRS	ATM	FIRST AID POINT
MEETING ROOMS	FIRE ESCAPES	TELEPHONES	ASSEMBLY POINT
RETAILERS	TOILETS	WEB ZONE	EMERGENCY ESCAPE ROUTES
RBS BRANCH MEETING ROOMS			

Travelling to Gogarburn

Gogarburn, situated six miles to the west of Edinburgh and two miles from Edinburgh International Airport, is well served by buses and lies approximately two miles from South Gyle and Edinburgh Park railway stations.

By bus

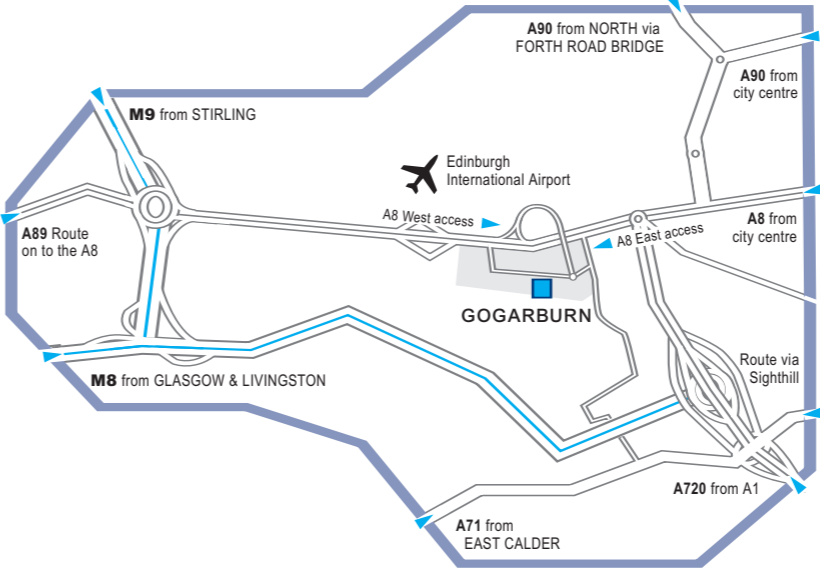
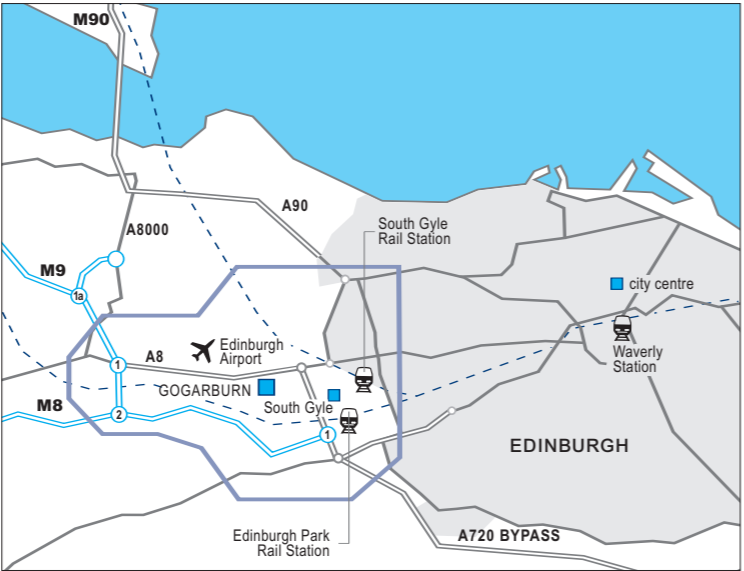
Gogarburn is well served by buses. There are frequent services from the airport and the city. To find out more about buses, visit www.travelinescotland.com

By rail

Edinburgh Park or South Gyle stations are approximately two miles from Gogarburn. Visitors can use the RBS rail shuttle in the peak periods. Waverley Station is in the city centre, approximately eight miles from the site, with good onward bus links. To find out about onward travel from these stations, visit www.travelinescotland.com

By car

If parking is required, it must be pre-booked. If you need a parking space, please ask your host to book one or call Front of House. Employees can book a space through Click&Park.

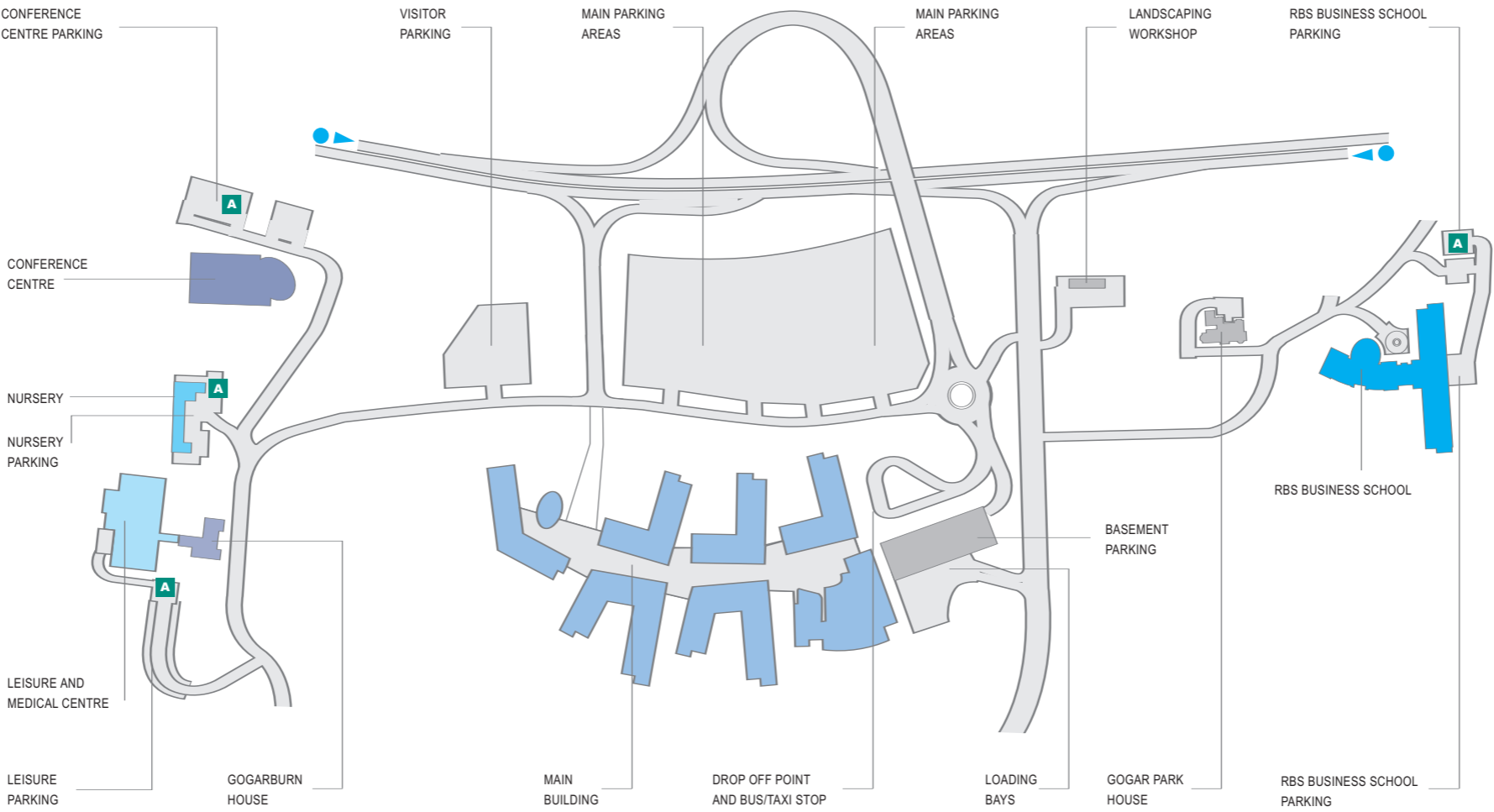


By cycle and motorcycle

The traffic free canal cycle path runs from the centre of Edinburgh out past the Gyle and Gogarburn. The path is a 10-minute ride from Gogarburn. Facilities for cyclists and motorcyclists include shower rooms and secure parking. To find out more about cycling visit www.cyclingscotland.com

By plane

From Edinburgh International Airport, visitors can either take a 5-minute taxi ride, the RBS taxi bus, or use the airlink bus to Gogarburn. This runs on a 7-minute frequency and stops on the A8 running through to the city centre. For more information on the airport bus service, visit www.flybybus.com



- A ASSEMBLY POINT
- ✈ AIRPORT
- R TRAIN STATION

Gogarburn

The useful pocket guide on Travel and Safety information to and around the new RBS Gogarburn site.