

Degenerative Spondylolisthesis of the Lumbar Spine: Surgical Options



**Nuffield
Health**

Following your recent investigations and consultation with your spinal surgeon, you have been diagnosed with degenerative lumbar spondylolisthesis.

This is the forward slippage of one lumbar vertebra (bone of the spine) on the vertebra below it. The slippage occurs because of wear and tear on the joints that link at the back of the vertebra (facet joints), so much so that the spine is unable to maintain its proper position.

The degree of spondylolisthesis may vary from mild to severe. Symptoms may include lower back pain and pain in the thighs and buttocks, stiffness, muscle tightness and tenderness in the area of the slippage.

If too much slippage occurs, it can create narrowing of the spinal canal (spinal stenosis).

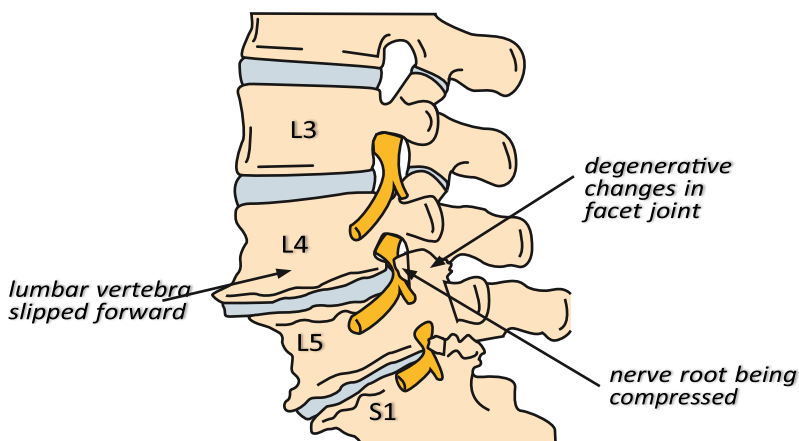
The normal spinal column has a central canal (or passage) through which the spinal nerves pass down. At each side of the vertebral level, spinal nerve roots branch out to each side. The solid spinal cord stops at the top of the lumbar spine (lower back) and from this point the nerves to the bottom and legs pass through the lower canal like a horse's tail forming the cauda equina. The spinal cord, nerve roots and cauda equina are surrounded by cerebrospinal fluid (CSF) and are all contained within a membrane, or covering, called the dura mater, rather like the thin layer that covers a boiled egg.

The ligamentum flavum is a tough band of elastic tissue (ligament) that connects the vertebrae and provides stability for posture and protection for the dura mater.

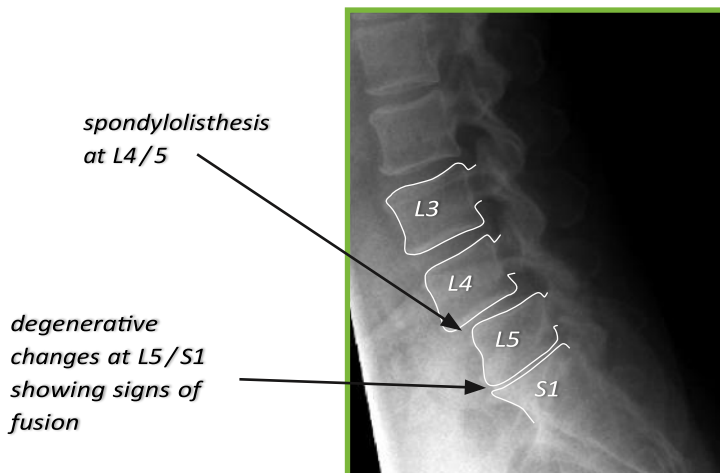
There are five bones (vertebra) in the lumbar spine. In between each bone is an intervertebral disc, which acts as both a spacer and a shock absorber. Over time as disc degeneration (wear and tear) occurs, the disc will lose water and height and as such, close down the bony passage (foramen) where the nerve root passes through on leaving the spine.

In spinal stenosis, the spinal nerve roots and / or cauda equina become trapped or compressed by the narrowing of these nerve passages, by arthritic joint swelling and bony overgrowths (osteophytes) which grow into the spinal canal and the bunching up (buckling) of the ligamentum flavum, like an elastic band losing tension or bulging of the intervertebral discs. Rarer cases include cysts or fatty collections or tumours in the spinal canal.

Diagram 1 showing spondylolisthesis at L4 / L5



X-ray showing spondylolisthesis at L4/L5



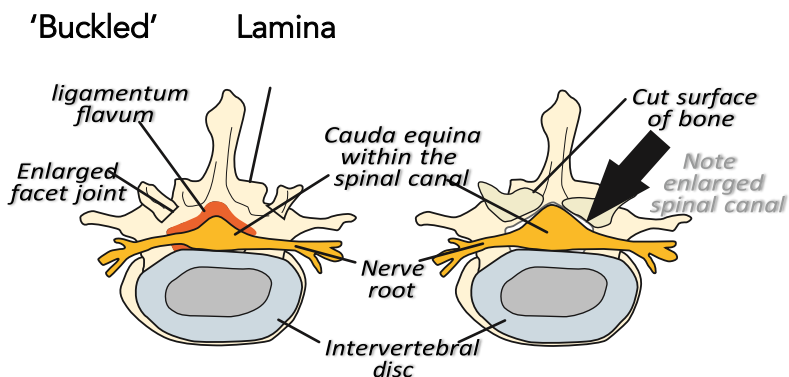
When nerves are compressed they can produce symptoms of pain, numbness and tingling in the legs and felt in the area of the leg that the particular spinal nerve supplies. In rare cases they can produce severe pain and even weakness in the legs, such that the 'legs don't work'. In most cases, the symptoms are produced when standing or walking and are relieved by sitting or bending forward, as this can temporarily open up the nerve passages. In rare cases the nerves which control your bladder, bowel and sexual function can be compressed. This is known as cauda equina syndrome (CES) and often requires urgent surgical intervention. Fortunately, immediate spinal surgery is only necessary in a few cases.

Unfortunately, most conservative treatments (manipulation, physiotherapy, medication or injections) are unlikely to be of much long-term benefit, and the symptoms rarely improve permanently without surgery to take the pressure off the nerves (decompression), as well as dealing with the instability of the spine.

The objective of surgery is to remove the material (for example the excess bone and 'bunched up' ligament from the back of the spinal canal) to give the nerve roots and / or cauda equina more room. The surgeon will decide whether there is a need to stabilise the spine by using an internal implant system. Sometimes radical decompression surgery can further weaken the spine's stability, so the exact extent of surgery can only be decided during the procedure.

Below is a cross-sectional (axial) view of the disc, cauda equina, nerve roots and facet joints of the spine. Note the size of the spinal canal after surgical decompression (diagram 3).

Diagram 2 (Before) Diagram 3 (After)



The nature of spinal surgery is not to 'cure', and it cannot prevent further degeneration of the spine, but is aimed to provide benefit with a good percentage improvement and relief of leg symptoms. Good relief from leg symptoms following decompression surgery usually occurs in approximately 70 – 80% of cases (up to 8 out of 10 people). **This is not necessarily felt immediately but over a period of time, often several months. Sometimes however, numbness or weakness can persist,** even with a technically successful operation. This can occur when people have more extensive stenosis before they have surgery. Rarely, the surgery may make your symptoms worse than they were before. The results of the operation are not nearly as reliable for the relief of lower back pain. Much of the back pain experienced comes from arthritis and associated muscular spasms, therefore, decompression surgery cannot eliminate this and it should not be regarded as the main aim of the surgery.

The operation

There are several different techniques when performing an operation to deal with the condition called degenerative spondylolisthesis. Expected outcomes from all methods are very similar and the choice of operation will be decided by the surgeon.

Decompression

Laminectomy and / or laminotomy

This is performed through an incision in the midline of the lower back. The position and length of incision is determined by which levels of the spine and how many nerves are involved. The muscles are then held apart to gain access to the bony arch and roof of the spine (lamina). Next, the surgeon needs to gain entry into the spinal canal by removing some bone, either by cutting away the whole area of lamina (laminectomy) or making a small window in the lamina (laminotomy) with a high-speed burr (like a dentist's drill). Bone and ligament are removed and often the facet joints, which are directly over the nerve roots, are undercut (trimmed) to relieve the pressure on the nerves and give them a wider passage as they pass out of the spine.

Stabilisation

Before stabilisation surgery is carried out, several factors are taken into consideration. These include assessing how unstable the spinal segments are, which nerves are involved and how narrow the nerve canal has become.

Bone graft

This is used to fuse (join together) and stabilise the spine in conjunction with other techniques, which are mentioned below. It is laid between the outer segments of the spine, in between the transverse process (intertransverse region) and your new bone will, over time, grow into the bone graft.

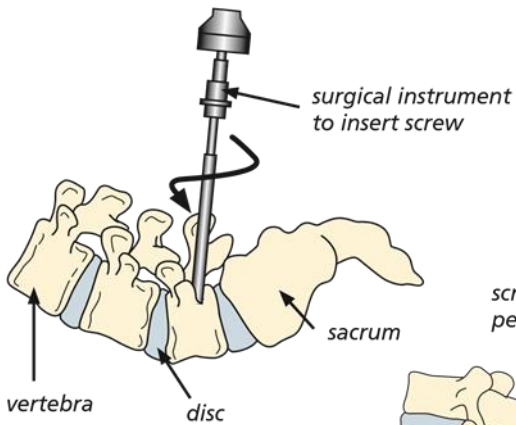
This is a biological process over 3 – 6 months, known as spinal fusion. There are several techniques to obtain the bone graft needed for spinal fusion:

- patient's own bone (autograft bone). The bone that is removed during surgery can be used as a bone graft,
- if more is needed, for the most part, artificial bone is now used.

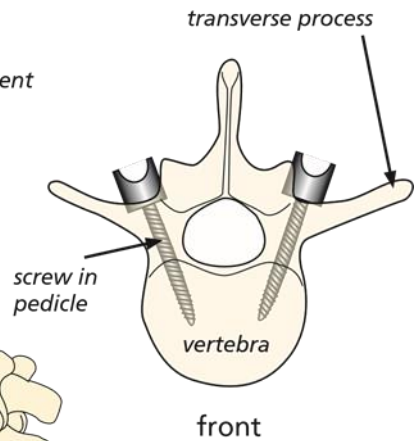
Pedicle screw fixation

This is a system of screws and rods which hold the vertebra together and prevents movement at the segment that is being fused, like an internal scaffolding system. Screws are placed into the part of the vertebra called the pedicle, which go directly from the back of the spine to the front, on both sides, above and below the unstable spinal segment. These screws then act as firm anchor points to which rods can be connected. After the bone graft grows and fuses to the spine (after many months), the rods and screws are no longer needed for stability. However, most surgeons do not recommend removing them except in rare cases.

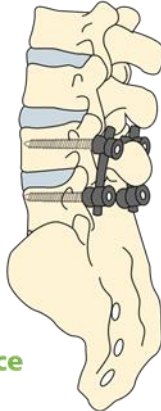
Side view of pedicle screw placement



Overhead view of pedicle screw in the vertebral body



Complete system in place



X-rays showing the stabilisation system in place, side and front views



Interbody fusion

This is a procedure where the surgeon will remove the intervertebral disc, the structure between the bones of the spine (vertebra), and fuse the space with a cage and bone graft. This can enable the surgeon to achieve an all-round (360°) spinal fusion and to increase the height of the interbody space and therefore the bone canal, for the nerve to pass through.

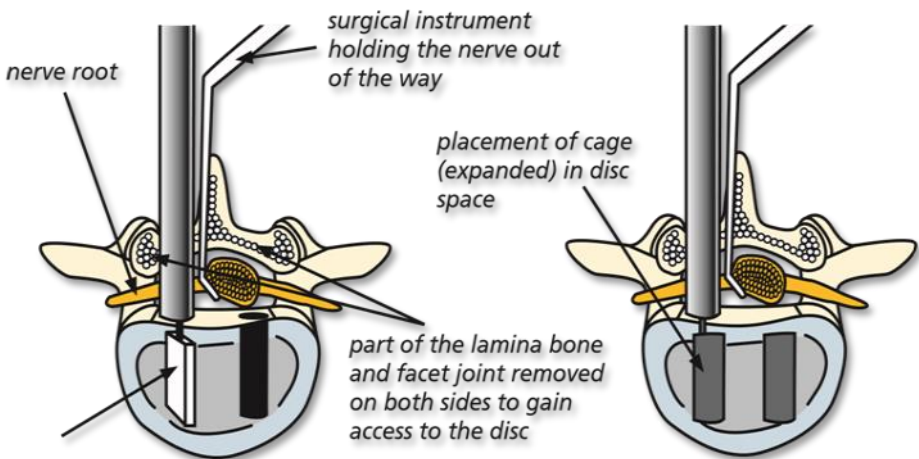
Intervertebral fusion cages

This is like a hollow Lego brick which props up the disc space between the two bones (vertebra). It is a tight fit and gives immediate stability. The cage is different widths, heights and depths to fit your spine exactly, it is made titanium metal. They can be filled with bone graft or artificial bone if required and are used in interbody fusion surgery.

The surgical approach (way in) to interbody fusion also varies and can include:

- **posterior lumbar interbody fusion (PLIF)**. The spine is approached from the back and part of the lamina bone and facet joint is removed on both sides to gain access to the disc;

Posterior lumbar interbody fusion (PLIF)



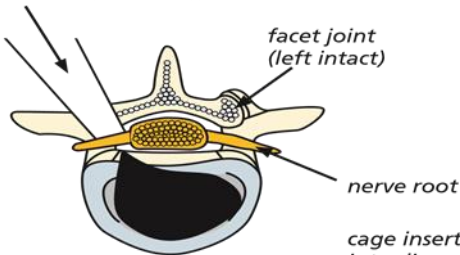
disc removed and space for cage created

front

- **transforaminal lumbar interbody fusion (TLIF).** The spine is approached again from the back and all of the facet joint is removed on one side to gain access to the disc;

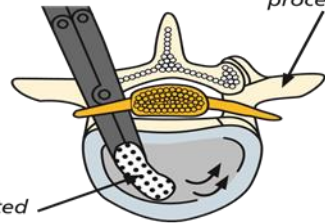
Transforaminal lumbar interbody fusion (TLIF)

facet joint removed to gain access to the disc for removal



front

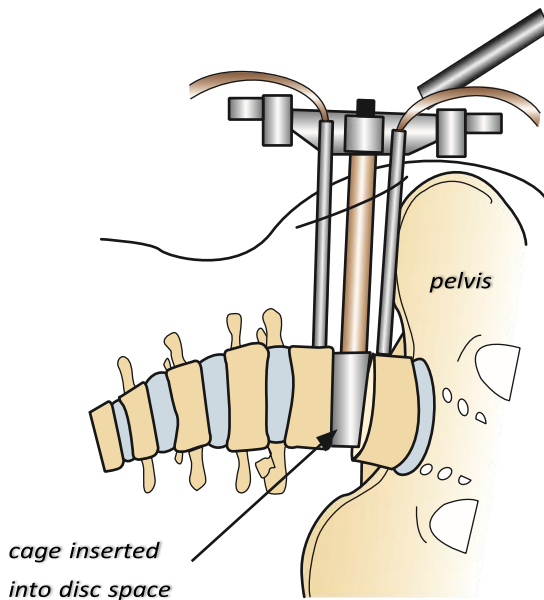
transverse process



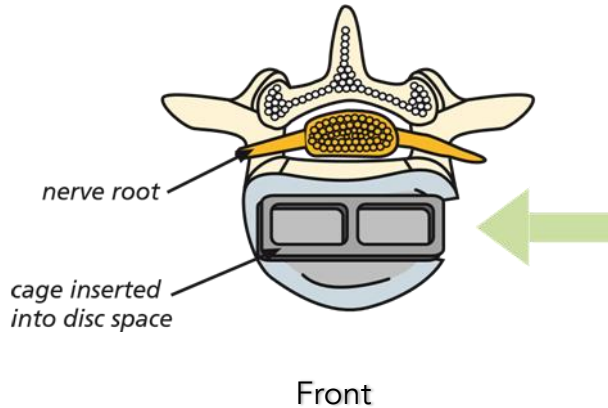
front

- **extreme lateral interbody fusion (XLIF).** The spine is approached from the side of the body, through an incision just above the pelvis. This particular approach to the spine has risks and complications which are specific to it and are listed below the general ones.

Extreme lateral interbody fusion (XLIF) approach



Extreme lateral interbody fusion (XLIF)



Risks and complications

As with any form of surgery, there are risks and complications associated with this procedure.

These can include:

- damage to a nerve root. This occurs in less than 1 out of 100 cases of primary surgery but is much more common in revision or 're-do' surgeries where injury can occur in up to 10 out of 100 cases. If this happens, you may get weakness in the muscles supplied by that particular nerve root and / or numbness, tingling or hypersensitivity in the area of skin it supplies;

- tearing of the outer lining or covering which surrounds the nerve roots (dura). This is reported in fewer than 5 out of 100 cases. It may occur as a result of the bone being very stuck to the lining and tearing it as the bone is lifted off. Again, it is much more common in 're-do' surgery. Usually the hole or tear in the dura is repaired with stitches, a patch or a special glue. If the puncture or hole re-opens you may get cerebrospinal fluid (CSF) leaking from the wound, headaches or, very rarely, meningitis. Although rare, the problems of leakage can persist. This could result in you having to return to theatre to enable the surgeon to revise the repair of the dura but the risk of a second operation being required within a few days or weeks is less than 0.05%;
- recurrent leg pain as a result of scarring;
- problems with positioning during the operation, which might include pressure problems, discomfort to breast tissue and skin and nerve injuries, and eye complications including, very rarely, blindness. Special gel mattresses and operating tables are used to minimise this;
- infection. Superficial wound infections may occur in up to 4 out of 100 cases. These are often easily treated with a course of antibiotics. Deep wound infections may occur in fewer than 1 out of 100 cases. These can be more difficult to treat with antibiotics alone and sometimes patients require more surgery to clean out the infected tissue. This risk may increase for people who have diabetes, impaired immune systems or are taking steroids;

- blood clots (thromboses) in the deep veins of the legs (DVT) or lungs (PE). These occur when the blood in the large veins of the leg forms blood clots and may cause the leg to swell and become painful and warm to the touch. Although rare, if not treated this could be a fatal condition if the blood clot travels from the leg to the lungs, cutting off the blood supply to a portion of the lung. It is reported as happening in fewer than 1 out of 700 cases. There are many ways to reduce the risk of a blood clot forming. The most effective is to get moving as soon as possible after your operation. **Walk regularly as soon as you are able to, both in hospital and when you return home.** Perform the leg exercises as shown to you by the physiotherapist, wear your anti-embolic stockings/pumps as advised and keep well hydrated by drinking plenty of water. You may be advised to stop taking any oral medication which contains the hormone oestrogen (like the combined contraceptive pill or HRT) four weeks before surgery, as taking this during spinal surgery may increase the chances of developing a blood clot. Your pre-assessment nurse will advise on this.
- difficulty with screw placement, including injury to the nerves or screw breakage;
- bleeding. You **must** inform your consultant if you are **taking tablets used to 'thin the blood'**, such as warfarin, aspirin, rivaroxiban or clopidogrel. **It is likely you will need to stop taking them before your operation as they increase the risk of bleeding.**

If your operation is scheduled with only a week's notice, please check with your consultant or pre-assessment nurse if any medications you take need to be stopped to prevent your surgery being delayed;

- bone graft non-union or lack of solid fusion (pseudoarthrosis). This can occur in up to 5 out of 100 cases. See below for factors which can affect fusion; and
- although rare, the surgery may make your symptoms worse than before.

There are also very rare but serious complications that in extreme circumstances might include:

- damage to the cauda equina and paralysis (the loss of use of the legs, loss of sensation and loss of control of the bladder and bowel). This can occur through bleeding into the spinal canal after surgery (a haematoma). If an event of this nature were to occur, every effort would be made to reverse the situation by returning to theatre to wash out the haematoma. Sometimes, however, paralysis can occur as a result of damage or reduction of the blood supply of the nerves or spinal cord and this is, unfortunately, not reversible;
- stroke, heart attack or other medical or anaesthetic problems; and

- extremely rarely, death; as a result of damage to major blood vessels or vital organs at the front of the spine, which is reported as happening in 1 out of 10,000 cases; or general anaesthetic fatal complications which have been reported in 1 out of 250,000 cases.

XLIF-specific risks and complications

- Damage of nerves which could result in thigh pain and / or numbness and weakness of the muscles involved with hip flexion, which may be temporary or permanent.

Factors which may affect spinal fusion and your recovery

- There are a number of factors that can negatively impact on a solid fusion following surgery, including:
 - smoking;
 - diabetes or chronic illness;
 - obesity;
 - malnutrition;
 - osteoporosis;
 - post-surgery activities (see note of recreational activities); and
 - long-term (chronic) steroid use.

Of all these factors, the one that can compromise fusion rate the most is **smoking**. **Nicotine has been shown to be a bone toxin** and it inhibits the ability of the bone-growing cells in the body (osteoblasts) to grow bone therefore, **risk of your implant failing is greater**. Patients should make a concerted effort to allow their body the best chance for their bone to heal by not smoking, ideally for 2 – 3 months before the operation. Your surgery may be delayed if you have not stopped smoking – or having nicotine in another form – beforehand.

What to expect after surgery and going home

Immediately after the operation you will be taken on your bed to the recovery ward where nurses will regularly monitor your blood pressure and pulse. Oxygen will be given to you through a facemask for a period of time to help you recover from the anaesthetic. You will have an intravenous drip until you are able to drink adequately.

A drain (tube) may be placed near the surgical incision if there has been significant bleeding during the operation.

This removes any excess blood or fluid collecting under the wound. The drain will be removed when the drainage has stopped, usually the next day, after surgery.

It is very normal to experience some level of discomfort or back and leg pain after the surgery. The nursing and medical staff will help you to control this with appropriate medication. **The symptoms in your legs may fluctuate due to increased swelling** around the nerves. As the nerves become less irritated and swollen, your leg pain should settle. This can take eight weeks, or longer. Normal feeling and strength in your legs is likely to take a lot longer and is likely to improve slowly over the next year or so. **It is important not to suddenly stop taking certain pain relief medication** such as morphine or neuropathic medication (gabapentin, pregabalin or amitriptyline). **It will be necessary to gradually 'wean' yourself off them – your GP can advise you if necessary.**

The ward physiotherapist will visit you after the operation to teach you exercises and will show you the correct way to move safely. Once you are confident and independently mobile, you will be encouraged to practise climbing stairs with the physiotherapist (if you have them at home).

Once stable you will be allowed home, usually 2– 3 days after surgery.

Please arrange for a friend or relative to collect you, as driving yourself or taking public transport is not advised in the initial stages of recovery.

Wound care

Skin wound closure depends on your surgeon's preference, your surgeon at Wessex Nuffield Hospital generally uses absorbable sutures and skin glue. Your ward nurse will give you specific instructions regarding your wound aftercare.

- Your wound will have the appearance of a dry scab and should be treated accordingly. You should not rub, scratch or pick at the wound. Doing so may compromise the integrity of the wound closure. The adhesive will flake off as the initial wound healing takes place.
- You should keep your wound clean and dry. Light showering is permitted. **Please avoid baths and immersion in water for 2 weeks until your wound is healed.**
- Do not apply barrier creams, petroleum jelly or mineral oils to your wound as this, too, may compromise the integrity of the wound closure.
- Keep your wound protected from injury during the healing period.
- The glue skin adhesive will naturally slough off completely between 10-14 days after the procedure. By this time, your wound should be sufficiently healed.

Please contact your GP and Wessex Nuffield Hospital if you think your wound might be infected. Symptoms could include:

- ⇒ redness around the wound
- ⇒ wound leakage
- ⇒ a high temperature.

Once the wound has healed and if the scar is sensitive to touch, you can start to massage around the scar using a non-perfumed cream or oil to encourage normal sensation and healing.

Driving

Normally you will be advised to **avoid driving for 4-6 weeks**, depending on your recovery. If you have no altered sensation or weakness in your legs at that point, then you may resume driving if you feel safe to do so, but you must be confident to do an emergency stop. It is also recommended to let your insurance company know that you have had spinal surgery. It is advisable not to travel for long distances initially (no longer than 20 minutes), without taking a break to 'stretch your legs'. **Gradually increase your sitting tolerance over 4 – 6 weeks.**

Recreational activities

It is important to keep mobile after surgery. You will find you get stiff if sitting for longer than about 20 minutes, so get up and walk about regularly.

Walking outside is fine but again, **increase your walking distances gradually. You will be advised to avoid lifting anything heavy, certainly for the first few weeks** but maybe for as long as three months after your operation.

Please check with your consultant and physiotherapist when you can resume specific activities, such as swimming or golf, as the advice could range from between six weeks to three months.

A graduated return to sport is then advisable.

- Sexual activities: There are no set rules or timing about when its right to commence sexual activities other than when it feels ok to you- treat it like another physical activity and build up gradually.
- Flying: your surgeon may advise you to avoid flying for six weeks (and long-haul flights for up to three months), because of the increased risk of deep vein thrombosis after surgery.

Work

Returning to work is dependent on both your recovery and your job. Most people are off work for an initial four weeks, but if you are in a strenuous job you may need up to six weeks. It is always sensible to discuss with your employer if you can return on 'light duties' or reduced hours at first. There is usually nothing to stop you doing computer / office work at an earlier date, as long as you can keep moving about. The hospital can issue you with a fitness to work (sick note) certificate or you may ask your GP.

Follow-up

You will be given a follow-up, appointments after your surgery; this is normally after 2 weeks with the physiotherapist and 6 weeks with your consultant, or from 6 weeks with your NHS team. If required, your ward nurse will make a wound review appointment for you at 2 weeks post-operatively.



What is the British Spine Registry (BSR)?

The British Spine Registry aims to collect information about spinal surgery across the UK. This will help us to find out which spinal operations are the most effective and in which patients they work best. This should improve patient care in the future.

The Registry will enable patient outcomes to be assessed using questionnaires. These will allow surgeons to see how much improvement there has been from treatment.

This has worked for hip and knee joint replacements through the National Joint Registry. We need your help to improve spinal surgery in the UK.

What data is collected?

Your personal details allow the BSR to link you to the surgery you have had. They also allow us to link together all the questionnaires you complete. If you need any further spinal surgery in the future, details of previous operations will be available to your surgeon.

Personal details needed by the BSR are your name, gender, date of birth, address, email address and NHS number.

Your personal details are treated as confidential at all times and will be kept secure. This data is controlled by the British Association of Spine Surgeons (BASS) and held outside the NHS. Personal details will be removed before any data analysis is performed, retaining only age and gender. Your personal data and email address will not be available to anyone outside BASS and its secure IT provider. Anonymised data may be released to approved organisations for approved purposes, but a signed agreement will restrict what they can do with the data so patient confidentiality is protected.

Your personal data is very important, as this will allow us to link details of your diagnosis and surgery with any problems or complications after surgery. You may also be asked to complete questionnaires before and after surgery to work out how successful the surgery has been. These will only be possible if we can connect you to the questionnaires through your personal details.

Do I have to give consent?

No, your participation in the BSR is voluntary and whether you consent or not, your medical care will be the same. Your personal details cannot be kept without your consent. This will be obtained either by asking you to physically sign a consent form or electronically sign one through an email link to a questionnaire or at a questionnaire kiosk in the outpatient clinic.

You can withdraw your consent at any time or request access to your data by:

- going to the patient section of the BSR website at www.britishspineregistry.com; or
- writing to us at the BSR centre (see address overleaf). Please state if you are happy for us to keep existing data, but do not want to be contacted, or whether you want your data to be anonymised (so it cannot be identified).

Research

Your consent will allow the BSR to examine details of your diagnosis, surgical procedure, any complications, your outcome after surgery and your questionnaires. These are known as 'service evaluations' or 'audits'.

Operation and patient information, including questionnaires in the BSR, may be used for medical research. The purpose of this research is to improve our understanding and treatment of spinal problems. The majority of our research uses only anonymised information which means it is impossible to identify individuals.

From time to time, researchers may wish to gather additional information. In these cases, we would seek your approval before disclosing your contact details.

You do not have to take part in any research study you are invited to take part in and saying no does not affect the care you receive.

All studies using data from the Registry will be recorded on the BSR website at www.britishspineregistry.com

Further information

The BSR website at www.britishspineregistry.com contains more information, including details of any studies and any information obtained through the Registry data.

To contact the BSR, write to:

The British Spine Registry

Amplitude Clinical Services

2nd Floor Orchard House

Victoria Square

Droitwich

Worcestershire WR9 8QT

If you have any questions regarding the information in this booklet and would like to discuss them with the Spinal Lead Nurse, please contact the Wessex Hospital on 02380-266377 or your Consultant via their Secretary.

Modified with permission from British Association of Spine Surgeons
(BASS) leaflets for Wessex Nuffield Hospital by Spinal Lead Nurse
Wessex Nuffield Health

Nuffield Health Wessex Hospital
Winchester Road
Chandlers Ford
Eastleigh
SO53 2DW
023 80 266377
www.nuffieldhealth.com

Document title: Wessex modified (with permission) BASS patient information leaflet		Related to: Spinal Practice Frame- work
Document classification: Restricted to Nuffield Health Wessex Hospital		
Issue date: October 2023	Review date: October 2025	Version: 1